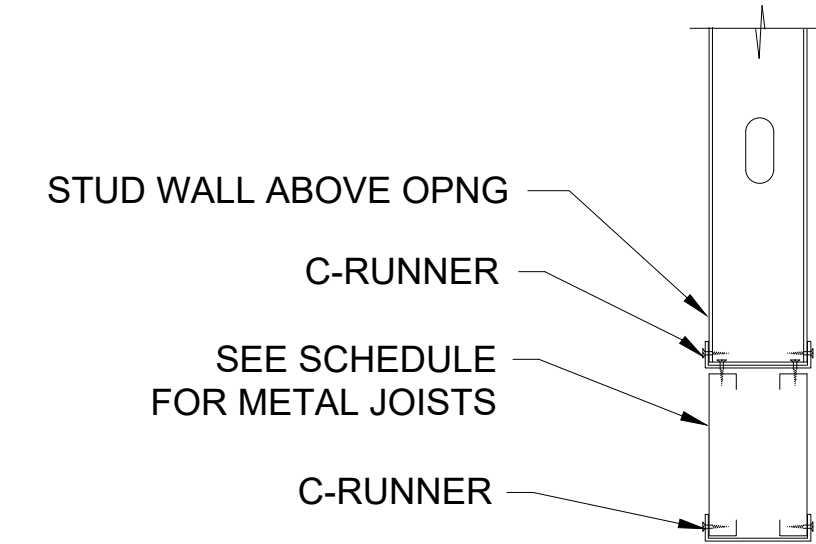
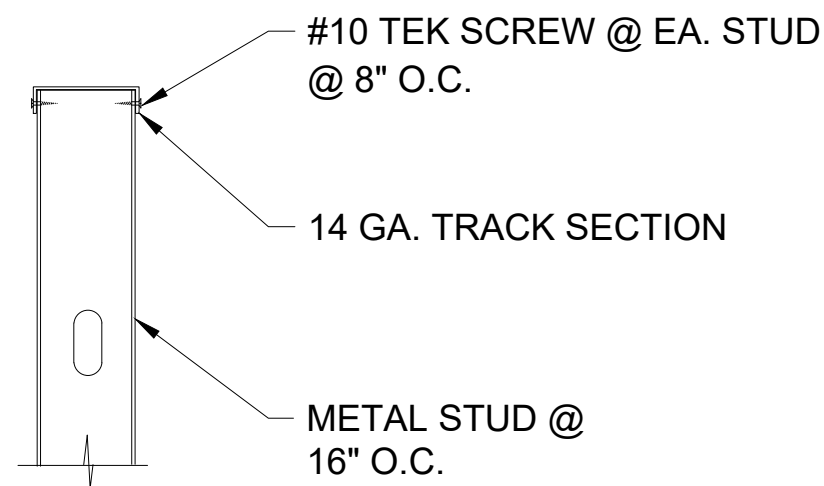


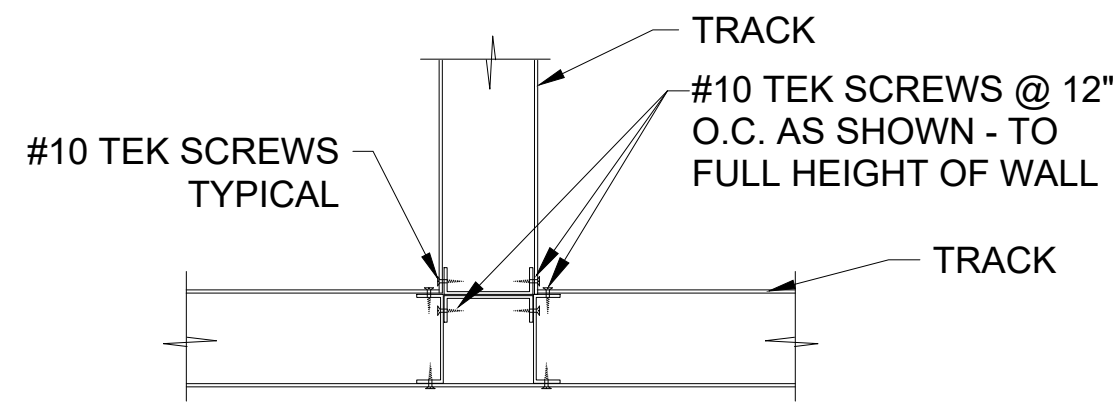
C STUD WALL CORNER DET.
A-502 SCALE: NONE



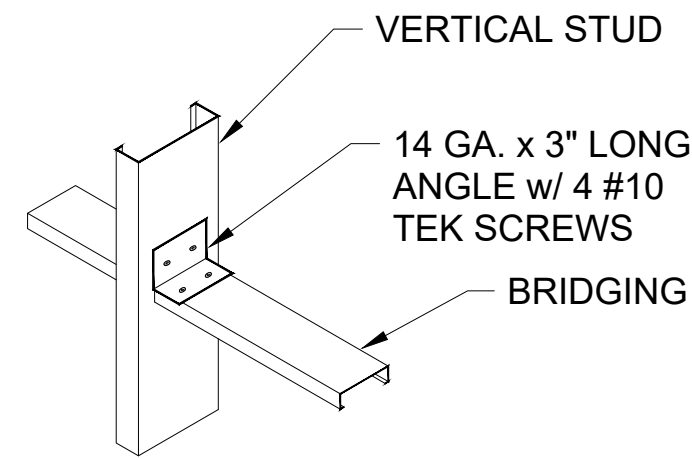
G TYP. HEADER DET.
A-502 SCALE: NONE



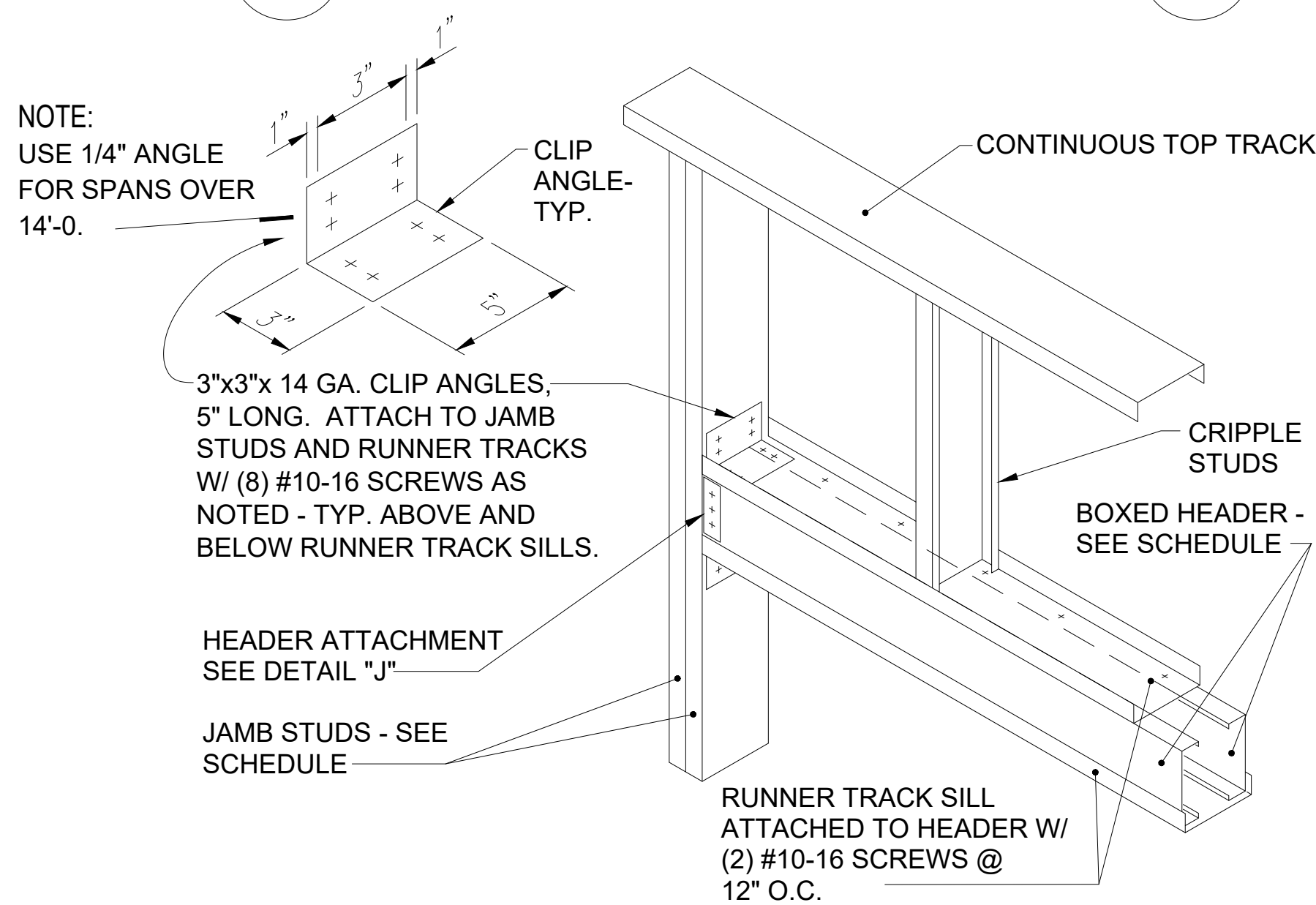
L TYPICAL TOP TRACK
A-502 SCALE: NONE



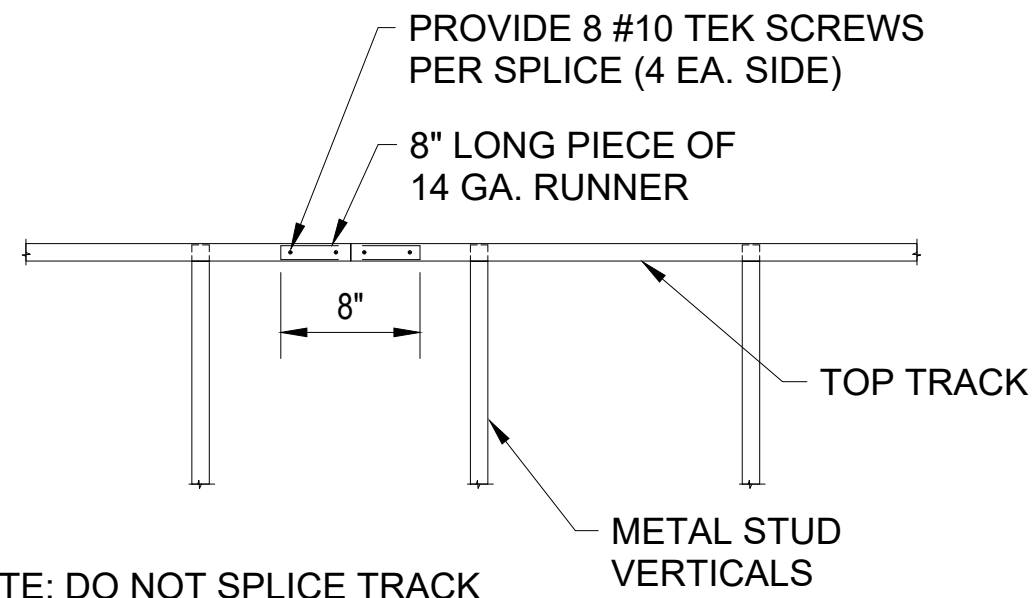
B WALL INTERSECTION DET.
A-502 SCALE: NONE



E BRIDGING DETAIL
A-502 SCALE: NONE

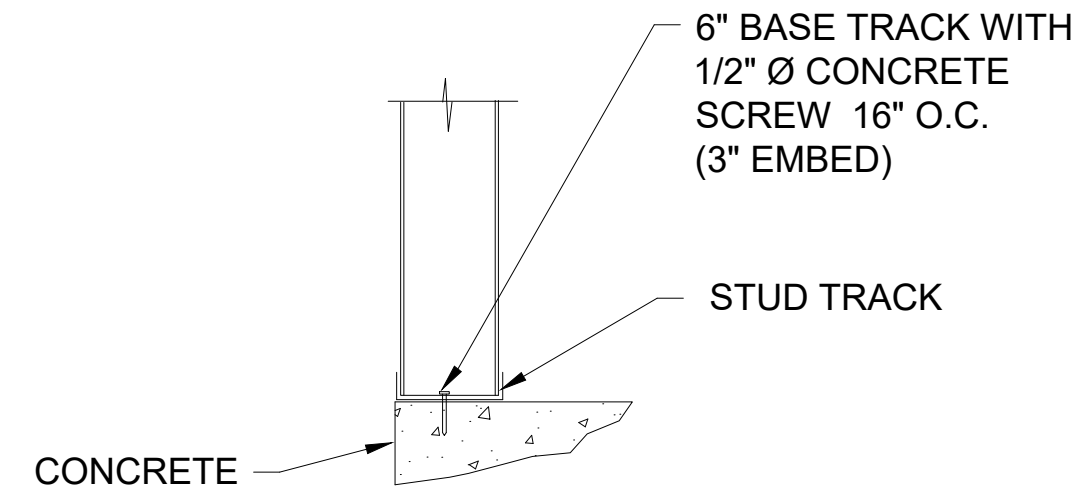


H TWO MEMBER HEADER
A-502 SCALE: NONE

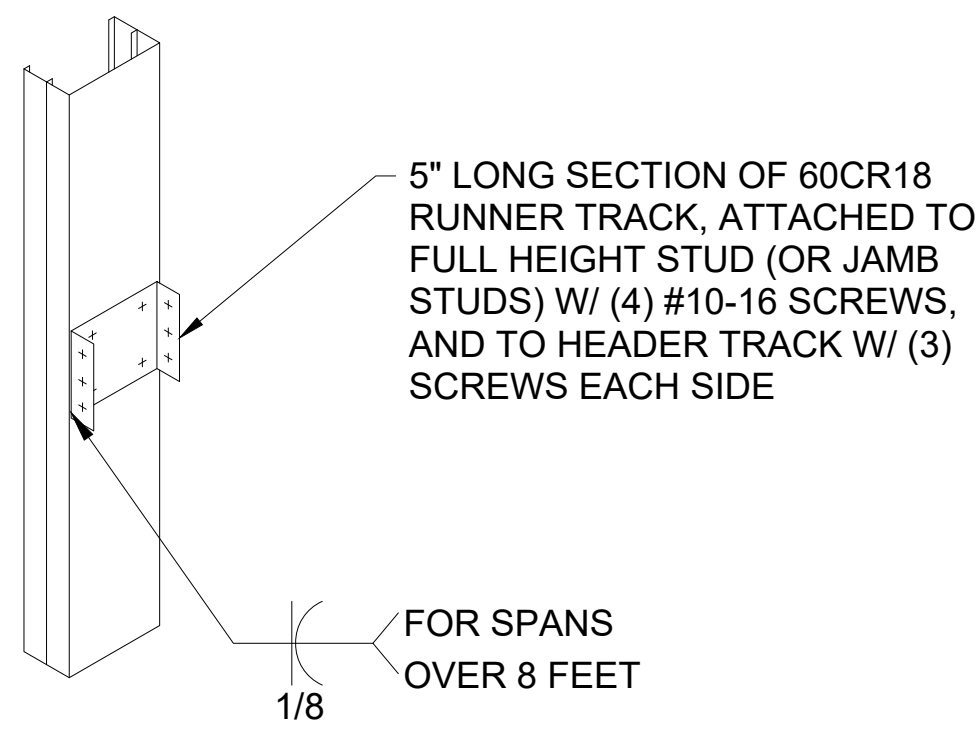


NOTE: DO NOT SPLICE TRACK OVER STUD.

A TOP TRACK SPLICE DET.
A-502 SCALE: NONE

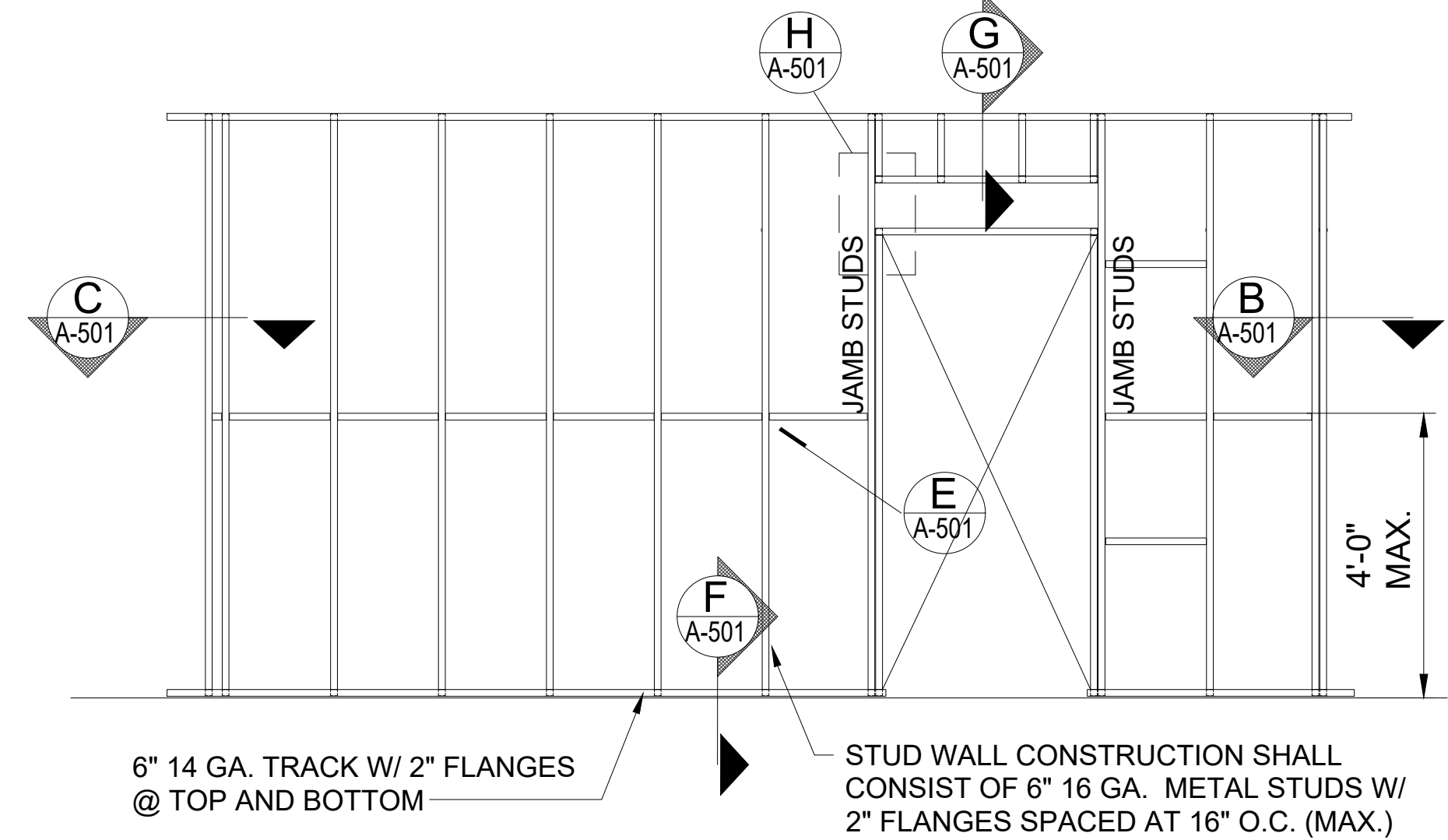


F RUNNER ATTACHMENT
A-502 SCALE: NONE



J HEADER ATTACHMENT
A-502 SCALE: NONE

DETAIL NOTES:
1. ALL FASTENERS SHALL BE TYPE 304 STAINLESS STEEL AND SIZED AS NOTED
2. COAT ALL EDGE OF STUD WITH FARBERTITE WATER-BASED COAL TAR COATING PRIOR TO INSTALLATION OF SHEATHING MANUFACTURED BY IPA PHONE #: 800-523-3834



TYPICAL METAL STUD WALL ELEV.
SCALE: NONE

WALL FRAMING SCHEDULE			
WALL HEIGHT MAXIMUM	STUD SPACING	STUD SIZE	REMARKS
9'-0"	16" ON CENTER	6" x 16 GA.	

HEADER AND JAMB SCHEDULE			
OPENING WIDTH	HEADER (UNPUNCHED)	JAMB	REMARKS
UP TO 6'-0"	2 - 6" x 16 GA.	2 - 6" x 16 GA	SEE DETAIL H
UP TO 8'-0"	2 - 8" x 16 GA.	2 - 6" x 16 GA.	SEE DETAIL H
UP TO 14'-0"	2 - 10" x 16 GA.	2 - 6" x 16 GA.	SEE DETAIL H. USE 6" LONG BY 16 GA TRACK w/ 8 #12 SCREWS FOR HEADER ATTACHMENT

GENERAL STUD FRAMING NOTES:

- STUD
- USE THREE (3) STUDS @ THE INTERSECTION OF ALL LOAD BEARING WALLS. (EXTERIOR).
 - JOIST MEMBER MUST BEAR DIRECTLY OVER STUD. IF NOT, A STRUCTURAL MEMBER IS REQUIRED ON TOP OF RUNNER TRACK FOR PROPER BEARING AND ANCHORAGE.
 - ENDS OF STUDS SHOULD SEAT FIRMLY IN RUNNER TRACK WHICH MUST HAVE FULL BEARING ON STRUCTURE.
 - TEMPORARY BRACING SHALL BE PROVIDED UNTIL ERECTION IS COMPLETED.
 - ALL VERTICAL STUDS SHALL BE INSTALLED WITHOUT SPLICES.
 - STUDS SHALL HAVE FULL BEARING AGAINST TRACK PRIOR TO STUD AND TRACK ATTACHMENT.
 - ALL VERTICAL STUDS SHALL BE 6" X 16 GAGE G90 GALVANIZED METAL STUDS. ALL TRACKS SHALL BE 14 GAGE G90 GALVANIZED.

- ATTACHMENTS
- USE #10 LOW PROFILE HEAD SCREWS FOR ALL STEEL TO STEEL CONNECTIONS EXCEPT AS NOTED ON THE PLANS AND DETAILS.
 - A 3/4" (MINIMUM) CLEARANCE MUST BE MAINTAINED FROM ALL EDGES AT THE STEEL MEMBERS IN LOCATING SCREWS. A 3/4" (MINIMUM) ON CENTER SPACING MUST BE MAINTAINED BETWEEN ADJACENT SCREWS.
 - FOR ATTACHMENT OF PLYWOOD TO STEEL STUDS AND JOISTS USE 1 15/16" BUGLE HEAD PILOT SCREWS.
 - FOR ATTACHMENT OF SINGLE - LAYER 1/2" OR 5/8" GYPSUM BOARD OR SHEATHING TO STEEL STUDS AND JOISTS, USE 1" #8 TEK BUGLE HEAD SCREWS.
 - WELDING PROCEDURE TO BE IN ACCORDANCE WITH AWS. SEE JOB SPECIFICATIONS FOR WELDING INSTRUCTIONS.
 - IN WELDING, THE ZINC COATING ON STEEL FRAMING WILL BE BURNED AWAY; THEREFORE, A ZINC RICH PAINT MUST BE APPLIED TO THE WELD AREA TO PROVIDE CORROSION RESISTANCE.
 - ALL SCREWS TO BE CADMIUM PLATED.

LIGHT GAGE STEEL WALL STUDS:

- METAL STUDS AND TRACKS SHALL BE OF THE TYPE AND SIZE AS SHOWN ON THE DETAILS. ALL MEMBERS SHALL BE GALVANIZED AND STUDS SHALL BE CEE TYPE WITH 2" FLANGES. INSTALL BRIDGING PER MANUFACTURER.
- STUD TO TRACK: #10-16 SELF DRILLING SCREWS D = 0.153" (EACH STUD FLANGE TO TRACK).
STUD TO STUD: 2 - #10-16 SELF DRILLING SCREWS D = 0.153".
- ALL STUDS SHALL BE FULL SEATED FOR FULL END BEARING ON TOP AND BOTTOM TRACK.



REVISIONS	
SCO - 100%	REVIEW 9/24

ATLANTEC ENGINEERS, PA
3221 BLUE BRIDGE ROAD, SUITE 113
RALEIGH, NC 27612
(919) 571-1111
1505 ST. JAMES PLACE
KINSTON, NC 28504
(252) 527-3336
WWW.RAYMONDGLOBAL.COM

RAYMOND
316 WEST MILLBROOK ROAD, SUITE 201
RALEIGH, NORTH CAROLINA
OFFICE: (919) 872-7866
WWW.RAYMONDGLOBAL.COM
LICENSE #53143 COAF C4282

PREPARED FOR:
NC DEPARTMENT
OF INSTRUCTION
SCO #
24-27792-01A

GOVERNOR MOREHEAD SCHOOL
SPRINKLER, ADA TOILET, LIGHTING
UPGRADES FOR DORMS A, B, & D
RALEIGH, NC

CONTENTS:
**STEEL WALL
DETAILS**

DATE: 05/27/2025
FOR CONSTRUCTION
DESIGNER:
ENGINEER:

SHEET NO.

A-502
OF